

VILLA BELLA METRO DISTRICT MAP DISTRICT 1, DISTRICT 2 AND DISTRICT 3

SECTION 16, AND SECTION 17, T20S, R64W OF THE 6th P.M., PUEBLO, COLORADO

DISTRICT 1: BOUNDARY AS SHOWN ON THE VILLA BELLA SUBDIVISION, BLOCK 16, AS RECORDED UNDER RECORD 101, TOWNSHIP 20 SOUTH, RANGE 64 WEST OF THE 6TH PRINCIPAL MERIDIAN, COUNTY OF PUEBLO, STATE OF COLORADO.

DISTRICT 2: BOUNDARY AS SHOWN ON THE VILLA BELLA SUBDIVISION, BLOCK 16, AS RECORDED UNDER RECORD 101, TOWNSHIP 20 SOUTH, RANGE 64 WEST OF THE 6TH PRINCIPAL MERIDIAN, COUNTY OF PUEBLO, STATE OF COLORADO.

DISTRICT 3: BOUNDARY AS SHOWN ON THE VILLA BELLA SUBDIVISION, BLOCK 16, AS RECORDED UNDER RECORD 101, TOWNSHIP 20 SOUTH, RANGE 64 WEST OF THE 6TH PRINCIPAL MERIDIAN, COUNTY OF PUEBLO, STATE OF COLORADO.

DISTRICT 4: BOUNDARY AS SHOWN ON THE VILLA BELLA SUBDIVISION, BLOCK 16, AS RECORDED UNDER RECORD 101, TOWNSHIP 20 SOUTH, RANGE 64 WEST OF THE 6TH PRINCIPAL MERIDIAN, COUNTY OF PUEBLO, STATE OF COLORADO.

DISTRICT 5: BOUNDARY AS SHOWN ON THE VILLA BELLA SUBDIVISION, BLOCK 16, AS RECORDED UNDER RECORD 101, TOWNSHIP 20 SOUTH, RANGE 64 WEST OF THE 6TH PRINCIPAL MERIDIAN, COUNTY OF PUEBLO, STATE OF COLORADO.

DISTRICT 6: BOUNDARY AS SHOWN ON THE VILLA BELLA SUBDIVISION, BLOCK 16, AS RECORDED UNDER RECORD 101, TOWNSHIP 20 SOUTH, RANGE 64 WEST OF THE 6TH PRINCIPAL MERIDIAN, COUNTY OF PUEBLO, STATE OF COLORADO.

DISTRICT 7: BOUNDARY AS SHOWN ON THE VILLA BELLA SUBDIVISION, BLOCK 16, AS RECORDED UNDER RECORD 101, TOWNSHIP 20 SOUTH, RANGE 64 WEST OF THE 6TH PRINCIPAL MERIDIAN, COUNTY OF PUEBLO, STATE OF COLORADO.

DISTRICT 8: BOUNDARY AS SHOWN ON THE VILLA BELLA SUBDIVISION, BLOCK 16, AS RECORDED UNDER RECORD 101, TOWNSHIP 20 SOUTH, RANGE 64 WEST OF THE 6TH PRINCIPAL MERIDIAN, COUNTY OF PUEBLO, STATE OF COLORADO.

DISTRICT 9: BOUNDARY AS SHOWN ON THE VILLA BELLA SUBDIVISION, BLOCK 16, AS RECORDED UNDER RECORD 101, TOWNSHIP 20 SOUTH, RANGE 64 WEST OF THE 6TH PRINCIPAL MERIDIAN, COUNTY OF PUEBLO, STATE OF COLORADO.

DISTRICT 10: BOUNDARY AS SHOWN ON THE VILLA BELLA SUBDIVISION, BLOCK 16, AS RECORDED UNDER RECORD 101, TOWNSHIP 20 SOUTH, RANGE 64 WEST OF THE 6TH PRINCIPAL MERIDIAN, COUNTY OF PUEBLO, STATE OF COLORADO.

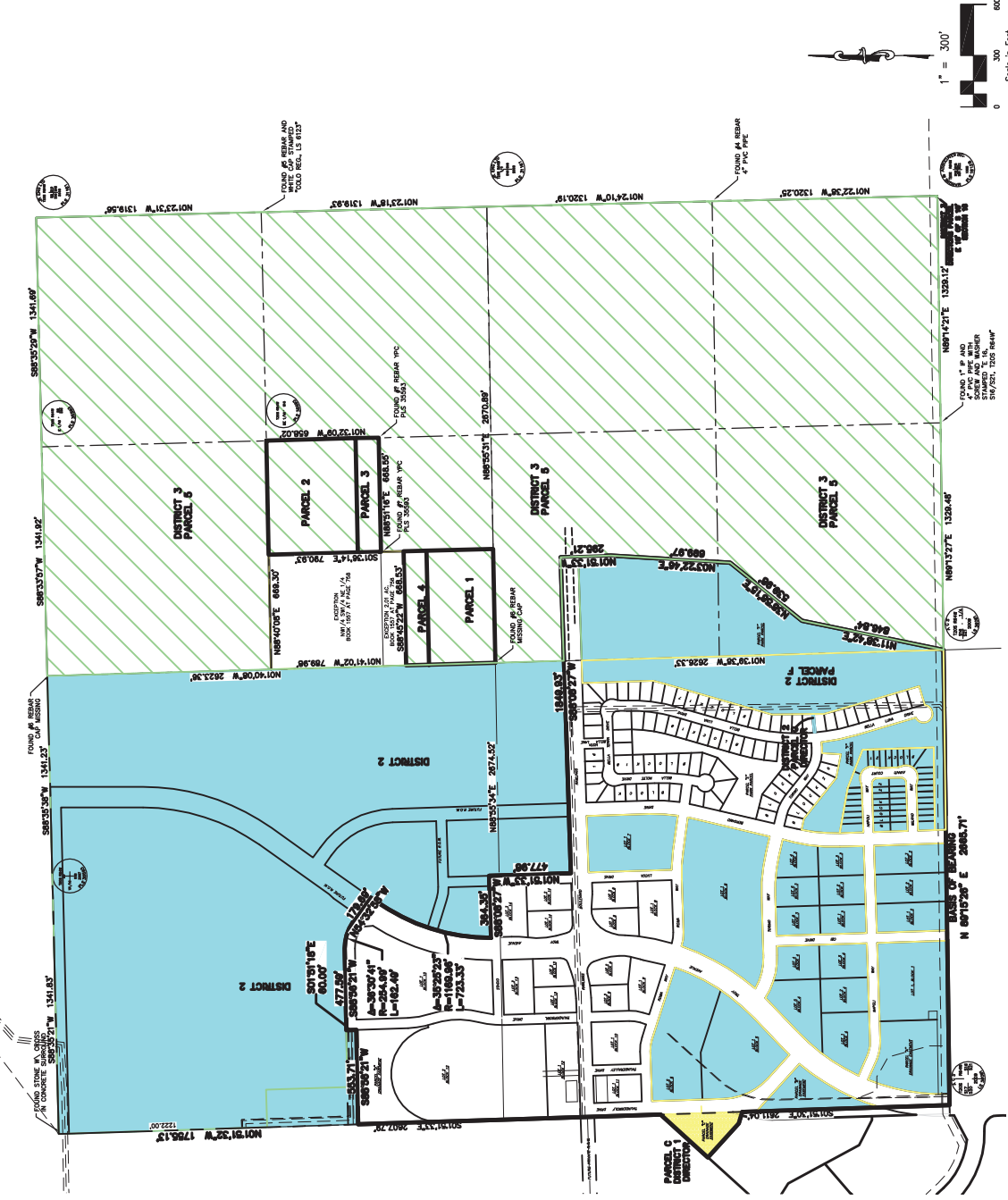
DISTRICT 11: BOUNDARY AS SHOWN ON THE VILLA BELLA SUBDIVISION, BLOCK 16, AS RECORDED UNDER RECORD 101, TOWNSHIP 20 SOUTH, RANGE 64 WEST OF THE 6TH PRINCIPAL MERIDIAN, COUNTY OF PUEBLO, STATE OF COLORADO.

DISTRICT 12: BOUNDARY AS SHOWN ON THE VILLA BELLA SUBDIVISION, BLOCK 16, AS RECORDED UNDER RECORD 101, TOWNSHIP 20 SOUTH, RANGE 64 WEST OF THE 6TH PRINCIPAL MERIDIAN, COUNTY OF PUEBLO, STATE OF COLORADO.

DISTRICT 13: BOUNDARY AS SHOWN ON THE VILLA BELLA SUBDIVISION, BLOCK 16, AS RECORDED UNDER RECORD 101, TOWNSHIP 20 SOUTH, RANGE 64 WEST OF THE 6TH PRINCIPAL MERIDIAN, COUNTY OF PUEBLO, STATE OF COLORADO.

DISTRICT 14: BOUNDARY AS SHOWN ON THE VILLA BELLA SUBDIVISION, BLOCK 16, AS RECORDED UNDER RECORD 101, TOWNSHIP 20 SOUTH, RANGE 64 WEST OF THE 6TH PRINCIPAL MERIDIAN, COUNTY OF PUEBLO, STATE OF COLORADO.

DISTRICT 15: BOUNDARY AS SHOWN ON THE VILLA BELLA SUBDIVISION, BLOCK 16, AS RECORDED UNDER RECORD 101, TOWNSHIP 20 SOUTH, RANGE 64 WEST OF THE 6TH PRINCIPAL MERIDIAN, COUNTY OF PUEBLO, STATE OF COLORADO.



772 N. WASHINGTON, SUITE 200
DENVER, CO 80202
PHONE: 773.555.5555



METRO DISTRICTS EXHIBIT
JOB NO. 43-130
DATE PREPARED: 09/15/2021
DATE REVISION:

1" = 300'
0 300 600
Scale in Feet

FOUND AS BEARING AND DISTANCE AS SHOWN ON THE VILLA BELLA SUBDIVISION, BLOCK 16, AS RECORDED UNDER RECORD 101, TOWNSHIP 20 SOUTH, RANGE 64 WEST OF THE 6TH PRINCIPAL MERIDIAN, COUNTY OF PUEBLO, STATE OF COLORADO.

FOUND AS BEARING AND DISTANCE AS SHOWN ON THE VILLA BELLA SUBDIVISION, BLOCK 16, AS RECORDED UNDER RECORD 101, TOWNSHIP 20 SOUTH, RANGE 64 WEST OF THE 6TH PRINCIPAL MERIDIAN, COUNTY OF PUEBLO, STATE OF COLORADO.

FOUND AS BEARING AND DISTANCE AS SHOWN ON THE VILLA BELLA SUBDIVISION, BLOCK 16, AS RECORDED UNDER RECORD 101, TOWNSHIP 20 SOUTH, RANGE 64 WEST OF THE 6TH PRINCIPAL MERIDIAN, COUNTY OF PUEBLO, STATE OF COLORADO.

FOUND AS BEARING AND DISTANCE AS SHOWN ON THE VILLA BELLA SUBDIVISION, BLOCK 16, AS RECORDED UNDER RECORD 101, TOWNSHIP 20 SOUTH, RANGE 64 WEST OF THE 6TH PRINCIPAL MERIDIAN, COUNTY OF PUEBLO, STATE OF COLORADO.

FOUND AS BEARING AND DISTANCE AS SHOWN ON THE VILLA BELLA SUBDIVISION, BLOCK 16, AS RECORDED UNDER RECORD 101, TOWNSHIP 20 SOUTH, RANGE 64 WEST OF THE 6TH PRINCIPAL MERIDIAN, COUNTY OF PUEBLO, STATE OF COLORADO.

FOUND AS BEARING AND DISTANCE AS SHOWN ON THE VILLA BELLA SUBDIVISION, BLOCK 16, AS RECORDED UNDER RECORD 101, TOWNSHIP 20 SOUTH, RANGE 64 WEST OF THE 6TH PRINCIPAL MERIDIAN, COUNTY OF PUEBLO, STATE OF COLORADO.

FOUND AS BEARING AND DISTANCE AS SHOWN ON THE VILLA BELLA SUBDIVISION, BLOCK 16, AS RECORDED UNDER RECORD 101, TOWNSHIP 20 SOUTH, RANGE 64 WEST OF THE 6TH PRINCIPAL MERIDIAN, COUNTY OF PUEBLO, STATE OF COLORADO.

FOUND AS BEARING AND DISTANCE AS SHOWN ON THE VILLA BELLA SUBDIVISION, BLOCK 16, AS RECORDED UNDER RECORD 101, TOWNSHIP 20 SOUTH, RANGE 64 WEST OF THE 6TH PRINCIPAL MERIDIAN, COUNTY OF PUEBLO, STATE OF COLORADO.

FOUND AS BEARING AND DISTANCE AS SHOWN ON THE VILLA BELLA SUBDIVISION, BLOCK 16, AS RECORDED UNDER RECORD 101, TOWNSHIP 20 SOUTH, RANGE 64 WEST OF THE 6TH PRINCIPAL MERIDIAN, COUNTY OF PUEBLO, STATE OF COLORADO.